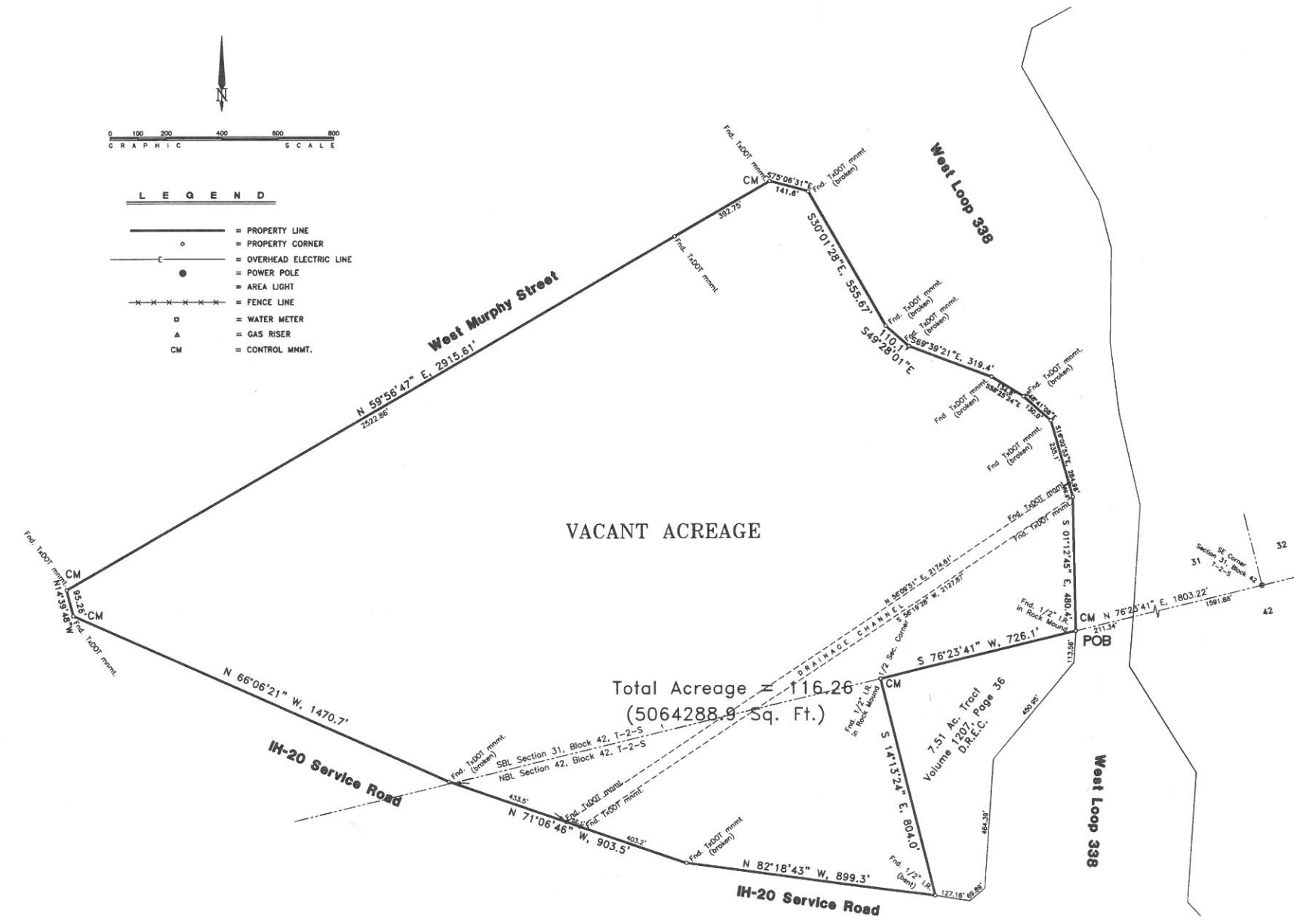


LEGEND

- = PROPERTY LINE
- o = PROPERTY CORNER
- E—= OVERHEAD ELECTRIC LINE
- = POWER POLE
- X—X—X—X—= AREA LIGHT
- = FENCE LINE
- = WATER METER
- △ = GAS RISER
- CM = CONTROL MNMT.



THE PLAT HEREON OF 116.26 ACRE TRACT OF LAND IN SECTIONS 31 AND 42, BLOCK 42, T-2-S, T&P RY. CO. SURVEY, ECTOR COUNTY, TEXAS, PREPARED FROM MEASUREMENT MADE ON THE GROUND MARCH 19, 2014.

FIELD NOTES OF A 116.26 ACRE TRACT OF LAND IN SECTIONS 31 AND 42, BLOCK 42, T-2-S, T&P RY. CO. SURVEY, ECTOR COUNTY, TEXAS.

BEGINNING at a 1/2 inch iron rod in rock mound found in the west right-of-way line of West Loop 338 for the northeast corner of a 7.51 acre tract of land, recorded in Volume 1207, Page 36, Deed Records of Ector County, Texas, and for the most easterly southeast corner of this tract, from which point the southeast corner of Section 31, Block 42, T-2-S, T&P Ry. Co. Survey, Ector County, Texas, bears, N76°23'41"E, 1803.22 feet.

THENCE S76°23'41"W, with the south boundary line of said Section 31 and the north boundary line of Section 42, Block 42, T-2-S, T&P Ry. Co. Survey, Ector County, Texas, 726.1 feet to a 1/2 inch iron rod found in rock mound at the 1/2 section line for the northwest corner of said 7.51 acre tract and an interior corner of this tract.

THENCE S14°13'24"E, with the 1/2 section line and the west boundary line of said 7.51 acre tract, 804.0 feet to a bent 1/2 inch iron rod found in the north right-of-way line of Interstate 20 Service Road for the most southerly southeast corner of this tract.

THENCE N82°18'43"W, with the north right-of-way line of said Interstate 20 Service Road, 899.3 feet to a broken TxDot monument found for an exterior corner of this tract.

THENCE N71°06'46"W, with the north right-of-way line of said Interstate 20 Service Road, at 403.2 feet pass a TxDOT Drainage monument, at 455.3 feet pass a TxDOT Drainage monument, at 888.8 feet pass the north boundary line said Section 42, 903.5 feet in all to a broken TxDot monument found for an interior corner of this tract.

THENCE N66°06'21"W, with the north right-of-way line of said Interstate 20 Service Road, 1470.7 feet to a TxDot monument found for an exterior corner of this tract.

THENCE N14°39'48"W, 95.26 feet to a TxDot monument found for in the south right-of-way line of West Murphy Street for the northwest corner of this tract.

THENCE N59°56'47"E, with the south right-of-way line of said West Murphy Street, at 2522.86 feet pass a TxDot monument found, continue 2915.61 feet in all to a TxDot monument found for the most northerly northeast corner of this tract.

THENCE S75°06'31"E, with a cutback, 141.6 feet to a broken TxDot monument found in the west right-of-way line of West Loop 338 for the most easterly northeast corner of this tract.

THENCE S30°01'28"E, with the west right-of-way line of said West Loop 338, 555.67 feet to a broken TxDot monument found for an interior corner of this tract.

THENCE S49°28'01"E, with the west right-of-way line of said West Loop 338, 110.1 feet to a broken TxDot monument found for an interior corner of this tract.

THENCE S69°39'21"E, with the west right-of-way line of said West Loop 338, 319.4 feet to a broken TxDot monument found for an exterior corner of this tract.

THENCE S58°25'24"E, with the west right-of-way line of said West Loop 338, 134.8 feet to a broken TxDot monument found for an exterior corner of this tract.

THENCE S48°41'08"E, with the west right-of-way line of said West Loop 338, 130.0 feet to a broken TxDot monument found for an exterior corner of this tract.

THENCE S16°02'53"E, with the west right-of-way line of said West Loop 338, 235.1 feet pass the northeast corner of a drainage channel, continue 284.96 feet in all to a TxDot monument found in the south boundary line of said drainage channel for an exterior corner of this tract.

THENCE S01°12'45"E, with the west right-of-way line of said West Loop 338, 480.4 feet to the point of beginning and containing 116.26 acres of land.

April 1, 2014
 Job No. 14-33484
 Betty Moss Dean

S. W. HOWELL, INC.
 COPY ONLY NOT FOR RECORDING
 MUST BE SIGNED AND SEALED
 TO BE RECORDABLE

No Title Commitment Furnished

No.	DATE	REVISION	BY
BOUNDARY SURVEY OF A 116.26 ACRE TRACT OF LAND Out of SECTIONS 31 & 42, BLOCK 42, T-2-S T.&P. RY. CO. SURVEY, ECTOR COUNTY, TEXAS			
PROJECT NO. 14-33484		DRAWING NO.	
DATE MARCH, 2014		SCALE 1"=200'	
DRAWN BY MNB		CHECKED BY SWH II	
S. W. HOWELL, INC. 409 EAST 57TH STREET ODESSA, TEXAS 79762 BUS. PH. (432) 367-5711 FAX PH. (432) 367-8743 © 2014 All Rights Reserved		Sheet ___ of ___	